

Leading Innovation that leads to a better world.

Toshiba's portfolio of eco solutions can help you meet your green objectives while increasing efficiency and reducing business costs.



The art and science behind going green.

Environmental laws are becoming stricter all the time and so are the budgets of businesses everywhere. That's why Toshiba developed the Encompass Ecosmart Program. Let us show you how we can help your business become greener than ever.

**The smaller the footprint,
the larger the savings.**

While others may be talking green, at Toshiba, we've been busy developing procedures and programs to help businesses like yours reduce, reuse and recycle. Whether it's turning used toner cartridges into park benches or manufacturing the world's first Eco MFP, Toshiba has become an environmental leader. We have the tools and know-how to help you meet your green objectives. And it's easy to get started. Our trained experts will perform a free analysis of your organization's environmental implications and then provide solutions that will help you increase your green efficiency while saving money.

Toshiba's Encompass Ecosmart Report.

Our comprehensive Encompass Ecosmart Report is an analysis of the environmental implications of your business operation including printing practices, electrical use, CO₂ emissions and more. Using information gathered during the assessment, the report calculates your eco-footprint and highlights areas of vulnerability. Our eco experts review all data with you and provide effective tools and techniques to correct inefficiencies helping you realize significant cost savings while meeting green objectives.

➤ REDUCE

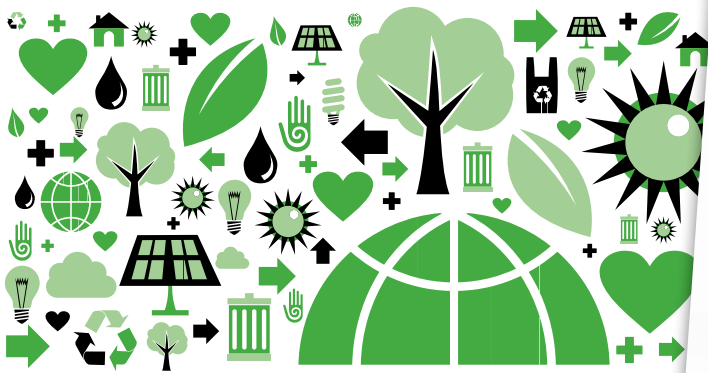
Less paper, less toner, less
waste. Everybody wins.

REUSE

Print on the same piece of paper again and again.

> RECYCLE

Turn old toner cartridges
into useful materials.



*Toshiba will show you
the many ways your business
can run more economically
and eco-friendly.*



Reduce. The trees will thank you.

One of the easiest places to start reducing your eco impact– while saving money – is with printing. Toshiba will collaborate with you to identify a solution that will best enable your business to print smarter, safer, leaner and greener.

More advances in printing solutions.

Our waste-reducing print software solutions include PaperCutMF, which lets you manage printing across your entire fleet and improve print efficiency with end-user authentication, ID cards, group-based control and usage monitoring. Pharos Secure Release allows users to securely submit their print jobs and uses the most efficient devices available. We also offer an energy manager application that controls and manages the energy settings on your entire fleet of printers as well as PCs and servers. In addition, it optimizes energy consumption during non-peak hours to take full advantage of energy savings.



PaperCutMF™



Pharos Systems

Reuse. It worked once. It will work again.

In addition to developing the first MFP with dual-side printing, Toshiba is the proud creator of the world's first MFP to print and erase the same piece of paper allowing you to use it an average of five times.

Multiple functions and multiple lives.

Another way to reduce your carbon footprint is by using refurbished MFPs. Even though many new printers and MFPs are designed to use less energy than previous models, the refurbished and remanufactured models reduce the amount of material and resources that are typically used to manufacture new products. Toshiba offers refurbished Hewlett Packard MFPs in partnership with Global Printer Services, the industry leader in remanufactured printers. In this way, we're able to give you the option of new or refurbished products in order to help lower costs and reduce your carbon footprint.

The MFP that gives paper new life.

Toshiba's revolutionary e-STUDIO4508LP offers all the functionality of a Toshiba MFP such as impressive warm up times, color scanning, and walk-up printing while also protecting the environment. It is the first MFP to incorporate a unique erasable toner enabling the output to be erased and re-used multiple times. Using the e-STUDIO4508LP, heat is applied to each page causing the print to disappear so the paper can be reused. And don't worry that eco benefits will hinder your efficiency. Prior to erasing, documents can be scanned to network or USB drive for future use. By reducing paper consumption, you are reducing solid waste streams and air and water pollutants. If that wasn't enough, reusing paper will assuredly, reduce costs.



The innovative e-STUDIO4508LP prints with erasable toner so paper can be used again and again.



Recycle. What goes around comes around.

What began as turning in used soda bottles for a few extra cents has turned into worldwide recycling efforts, with everything from old tires to new grocery bags. At Toshiba, we carefully consider each material used for every part and what methods we use to manufacture them.

What to make of all the waste.

At Toshiba, we use advanced processing in order to keep certain materials separate for recycling purposes while eliminating the use of others altogether. Our shipping crates and pallets are made with 100% recycled cardboard. Our toner cartridges can be recycled with zero waste to landfill as part of the Close the Loop recycling program. This allows for 100% recycling of consumable supplies such as cartridges, drum units and toner bottles. Products that were once considered unusable are now being made into eLumber for the construction of park benches and other outdoor furniture and structures. This program is completely free to end users and provides recycling boxes, supplies, freight, and recycling services.

It's easy to get with the program.

Together with several other manufacturers, Toshiba formed the Electronic Manufacturers Recycling Management to provide convenient ways to recycle consumer electronics goods. In addition to that, we have partnered with SIMS Recycling Solutions, to offer customers a means to recycle any EPEAT Registered copier, printer, MFP, fax machine, computer, tablet and television. We realize that short-term productivity must support long-term sustainability, for our business as well as yours. That's also why many of our products are RoHS Compliant, EPEAT Registered in the global registry for greener electronics, and Energy Star Tier 2 rated. Through the responsible collection, treatment, recycling and recovery of the products we build, Toshiba is also WEEE compliant. We've worked hard to make it easier for all of us to go green.



The path to a smaller carbon footprint.

We've put together an entire program to help both our business and yours reduce, reuse and recycle. It's simple, of course. That way, everyone is more likely to participate. So, let us help you become the most green you can.



Start with an Encompass Ecosmart Evaluation.

We'll come out and evaluate your current power usage, entire printer fleet, document management procedures and recycling efforts. Then we'll show you how you can reduce your carbon footprint.



Greener manufacturing.

We use recycled plastics and have eliminated harmful substances. Our printed circuit boards are 100% lead-free and halogen-free. The amount of product packaging has been reduced and our shipping crates are made of recycled cardboard. And, our efforts are being noticed. Four of our manufacturing facilities have received ISO 14001 certification.



Greener products.

Our service modules are rebuildable and developer units are self-refreshing. Printing is duplex by default and includes an omit blank page function, while our Super-Sleep Mode uses only 1 watt of power. In addition, the e-STUDIO306LP uses erasable toner so you can reuse the paper again and again.



Greener printing.

Save money on printing costs while saving the environment. Eco-friendly print solutions like PaperCutMF, Pharos Secure Release and an energy management application allow you to manage printing across your entire fleet, improve print efficiency and optimize energy consumption.



Environmental programs.

Toshiba offers its customers the Close the Loop program free of charge. That means you can recycle used cartridges and zero waste goes into landfills. Better yet, it goes into making waterproof, insect-proof eLumber. We provide the collection boxes, you discard the waste, and then it's picked up – for free.

So, let Toshiba help you go greener than ever before. We'll show you how to help the environment and your bottom line.

www.business.toshiba.com